

RYDA Newsletter

07/2022

Foraging has steadily become more popular for the past 20 years. Knowing which plant species to avoid and which to take home and eat has become ever more important due to the popularity of foraging among chefs, as seen on TV shows such as 'Masterchef'.

'It is inevitable that the more people there are foraging, the more people will end up accidentally eating something poisonous.

'Fortunately, this rarely results in serious long-term consequences, though it does occasionally happen.'

DANGEROUS: DEAD MAN'S FINGERS (*Oenanthe crocata*)

Dead man's fingers, also known as hemlock water dropwort, has toxic leaves and stems that look a lot like parsley, with attractive white flowers, while the even more toxic roots of the plant look and smell just like parsnips.

The reason for this is they belong to the same plant family – but this doesn't make dead man's fingers safe to consume.

All parts of the plant contain a powerful neurotoxin called oenantheotoxin, which triggers spasmodic convulsions, usually followed by sudden death.



Consuming any part of the plant can lead to nausea, vomiting, seizures, lethargy, sweating and visual hallucinations, as well as capable of causing convulsions and even sudden death. .

DANGEROUS: LORDS AND LADIES (*Arum maculatum*)

Lord and ladies is one of the many common names for this plant, given in reference to the apparent resemblance of its flower to male and female genitalia.



A spike protrudes from inside a cobra-like hood or 'spathe' of the flower, which also has arrow-shaped leaves.

This spike grows throughout the year into a long stalk that grows a dense cluster of attractive but dangerous red berries.

'All parts of this plant are poisonous, and the leaves and berries contain microscopic needle-like crystals of calcium oxalate which, upon contact with the soft tissue of mouth and throat, cause immediate and intense pain and irritation.'

'If you get the juice from the berries on your hands it will irritate your skin.'

Unfortunately, the arrow shaped leaves of lords and ladies look very similar to edible sorrel, and so they're often mistaken for each other.

DANGEROUS: COMMON FOXGLOVE (*Digitalis purpurea*)

The 'beautiful but deadly' common foxglove is very common in Europe in woodlands, mountain grassland and sometimes sea cliffs.

It's best recognised by its striking array of pinky-purple or white bell-like flowers on very tall stems with wrinkled, oval-shaped leaves.

the 'extremely toxic' foxglove can be mistaken for members of the edible borage family, although unlike borage it 'smells foul and tastes bitter'.

But the whole plant is extremely toxic due to the presence of glycosides, which cause skin irritation on contact, as well as vomiting, dizziness, delirium, convulsions, headaches and cardiac arrest if consumed.

Digitalis is still used today to make medicines that strengthen contractions of the heart muscle, typically for patients with congestive heart failure.

James Bond fans may recall their hero being poisoned with a Digitalis drug by antagonist Le Chiffre in the 2006 film 'Casino Royale'.



DANGEROUS: DEADLY NIGHTSHADE (*Atropa belladonna*)

Deadly nightshade is an attractive yet dangerous plant that inhabits hedgerows in England, often in dark and shady areas.

It has oval-shaped leaves with smooth edges, bell-shaped purple and green flowers and shiny black berries, dubbed 'death cherries'.

All parts of the plant are toxic, especially the berries, which contain a mixture of alkaloids that affect the nervous system.

One of them, atropine, causes sweating, vomiting, breathing difficulties, confusion, hallucinations and death.

It causes a wide range of symptoms associated with severe disruption to the nervous system, including hallucinations (victims may start talking gibberish or swipe at imaginary flying objects) and eventually death by respiratory failure. The berries pose the greatest danger to children because they look attractive and have a somewhat sweet taste.



So if a child tried one, there's a risk that they would keep on eating more and more of them – increasing the risk of a fatality.

It takes 10 or 20 of the berries to kill an adult, while just two can kill a child.

Rather confusingly, poisonous deadly nightshade is a member of the nightshade family Solanaceae, which also includes edible plants such as tomatoes, potatoes, eggplant and black nightshade (*Solanum nigrum*).

Be wary though – if you see a plant with berries that look like tomatoes in the wild, chances are they're poisonous members of the Solanaceae family.

But its not all bad news!

EDIBLE: THREE-CORNERED LEEK (*Allium triquetrum*)



Chances are you have stepped on the three-cornered leek in the wild without even knowing it's edible.

It's distinguishable by its white flowers on a three-cornered or triangular stem.

When pulled up from its roots, this species looks remarkably like spring onions. The entire plant smells of garlic and onion when crushed.

The whole of this plant is good to eat, from bulb to flowers. And can be used in soups, as a base for a mixed salad, to make a pesto, or as a cooked green vegetable.

In Britain, the three-cornered leek is considered invasive because it's not native – it was brought over from the Mediterranean in the 18th century – and rapidly spreads over large parts of land.

It can be found in abundance in woodlands, road sides and riverbanks.

EDIBLE: RAMSONS (*Allium ursinum*)

Ramsons, or wild garlic, coat the woodland floor in spring, especially in damp and shady woodlands.

The plant is detectable by its oval-shaped leaves, small white flowers and a distinctive and pungent garlicky smell easily noticed by foragers.



Ramsons are often used in salads and combined with eggs and mayonnaise, perfect for a sandwich filling.

Ramsons have been confused with lords and ladies, as well as another highly poisonous plant called lily of the valley (which has paired leaves unlike ramsons).

EDIBLE: JAPANESE KNOTWEED (*Reynoutria japonica*)

Japanese knotweed has made headlines recently for being one of the most feared invasive plants in Britain – but many people are unaware it's also edible.



Native to Japan, Korea and China, the weed was introduced to British shores by the Victorians as an ornamental garden plant.

But it spreads rapidly and has a powerful ability to force its way through concrete or brick, damaging structures such as houses and roads.

Except for the flowers, all parts of the plant are edible when young and tender, including the chunky stems.

The stems look and taste a bit like rhubarb, making it a good alternative for a crumble filling.

Japanese knotweed is 'under attack' from local authorities due to the damage it can make to buildings. For this reason, the plant may have been sprayed by industrial-strength herbicides.

'The only way to be absolutely certain you are avoiding this problem is to contact the landowner.

EDIBLE: BLACK NIGHTSHADE (*Solanum nigrum*)

Black nightshade has oval-shaped leaves, small, white, star-shaped flowers and clusters of round dark green berries that are green at first but a dull black when ripe.

'Both the berries and leaves of this plant have been extensively eaten historically, both foraged and cultivated. However, the berries only become edible when they ripen and turn black. When they're green and unripe, they contain large amounts of a toxin called solanine, which can cause drowsiness and gastrointestinal symptoms when ingested.

Solanine is also found in leaves and tuber – the bit that we eat – of the potato plant, which is why we should avoid eating green potatoes.

So how do we tell the difference between black nightshade and its dangerous relative deadly nightshade?



'Black nightshade has matt berries which hang in large clusters

Deadly nightshade has shiny berries which are usually singles, though sometimes two hang together.'

Volga Germans – ethnic Germans who settled and historically lived along the Volga River in Russia – traditionally use black nightshade berries in a cake or to fill dumplings.



Edible: Have you tried **Fuchsia Berries**? They have a peppery taste. After the flowers have bloomed, they should form fuchsia seed pods: berries that range in colour from purple to light or dark green. Birds love these berries, – if they feel soft between your fingers, they're ready to pick.

A WARNING FOR FORAGERS

Avoid plants if you can't identify them, and get advice from expert sources rather than random people on social media.

Social media provides an endless supply of unreliable information, and this is no exception.

'It is a particular problem with foraging, because a lot of people online want to play at being an expert, and it is hard to know who actually knows their stuff and who is guessing.'

Smartphone apps that claim to identify a plant just from a photo should also be given a miss. They regularly make mistakes that no human would make – e.g. mistaking ivy for maple.

'Identifying plants requires much more than just visual properties – smell, habitat and location are all important.'

'If you are going to learn how to forage, then you need to learn how to identify wild species yourself, and you need to know what can be confused with what.' – Arm yourself with a good book that has both pictures and descriptions

The Parish Council has installed a defibrillator at the pavilion at Butts Park. It was supplied by the South Western Ambulance Service (SWAS) and is now live on the National Defibrillator network - The Circuit. SWAS will be holding a free defibrillator training event in the autumn (date and location to be confirmed).



Don't get caught out by scam websites! New tool lets you confirm whether a site is safe to use BEFORE visiting



Internet safety group Get Safe Online is hosting a free website-checking tool that lets you see if it is a scam before accessing it.

<https://www.getsafeonline.org/checkawebsite/>

Our thanks go to Alan Lomax & Chris Bradley who removed the 2 old benches from Noss Green at the end of June. The new bench has been installed by Andrew and Dave Goodchild complete with dedication plaque to Her Majesty.

Your RYDA committee, work tirelessly on the behalf of its members, not only replacing benches, but assisting with woodland maintenance, sitting on other committees that are related to the work of the RYDA, raising funds for replacing Popes Quay bollards, new flags, new handrails for the Noss Voss steps, and insurances for the woodlands and harbour clean up, Maintaining and publishing the village directory etc as well as heaps of paperwork & keeping the community up to date with what's going on via our Newsletters and Face book page

Yealm Community Electric Transport : Electric Water Taxi Project

Mooring holders may have already heard of a project by local people to create a seasonal electrically powered water taxi service in the river. The project, known as Yealm Community Electric Transport (YCET), has requested the Authority send a newsletter from YCET providing background on YCET and the project. This is attached. The newsletter explains how and during which hours YCET intends to operate its service and that it will not compete in any way with the seasonal ferry service provided by Billy Gregor.

Following a formal request from YCET, the Authority has agreed to permit the laying of electrical cabling, as well as the along-side docking of the water taxi on the downstream, shoreside of the hammerhead pontoon. A seasonal licence agreement has been completed between YCET and the Authority covering rights and obligations relating to access, mooring, adherence to Authority rules and regulations, and so on.

As many of you will have already observed this season, there is a growing trend towards the adoption of electric propulsion for tenders by visitors and local people. The Authority believes this reflects a wider awareness about how to address pollution in the river and how best to embrace renewable energy sources for the future. Whilst the Authority does not sponsor, or promote the YCET project in anyway, it is for these reasons that it was felt appropriate to agree to YCET's requests.

More generally, Yealm Steps continues to cause issues and concerns for many. In particular, dinghy congestion at the Yealm Steps pontoons can be a major issue at times. We would like to remind dinghy owners that dinghies left at Yealm Steps must be kept clear of rainwater and display a valid Harbour Licence. Dinghies that do not comply with this request may be removed by the Authority



It's Exciting It's Electric!

We would like to introduce you to Yealm Community Electric Transport.

We are a non-profit making organisation and all net proceeds will be donated to local environmentally based causes.

From an idea conceived 18 months ago in a desire to offer the community an electric powered water transport service, we are now delighted to announce that the boat is ordered and we will soon be able to offer you a regular service to and from your vessel and various points along the River Yealm.

What is it about?

You may be saying "but we already have a taxi service on the Yealm". Rest assured we are not here to compete with Billy Gregor, who runs an existing service. Our hours will complement his and be mornings before 10am and 4pm until late. This will be on demand, when the tide and weather permits of course. You may see us on the river during the day, but this would be for longer educational or school trips and for the disabled to experience our wonderful river.

The Boat?

It's custom built, 7m long with an aluminium hull and has a landing ramp for the less able. It has electric power for pollution free travel. One or two permanent crew will be employed, supplemented by volunteers.

What does it mean for you?

If you're a local or visitor and want to get from Noss to Newton, to the shops, to the pubs, to the playground, and the tide is in, then give us a call and let us help.

If you're a visiting boat, then no need to inflate your dinghy or wrestle with that outboard! Just give us a call for us to pick you up and take you along the River to your destination (and pick you up at an agreed time and place to come back of course!)

- Community Service - Zero Emissions - Helping The Villages -

What's next?

The project has secured some start up grants and funding, we do need more donations to get the service launched. If you would like to donate then please scan the QR code below or contact us at info@ycet.co.uk. We will be pleased to hear from you too if you want to find out more or are interested in becoming more involved in this exciting project.

Our website www.ycet.co.uk will soon be up and running, so why not log in to learn more and see how you can support the project?

Clean, green and environmentally friendly

Our aim is that the project is used as a case study both regionally and nationally and will help to make a step change in electric transport in the UK



Scan to make a donation

A look at the past!



A reminder of the Jubilee celebrations with previously unshared photos.

Yealmpton Church. Photos courtesy of Margaret Thomas





Newton's Queen for the day; Suzanne Sparrow



& last but by no means least – the WI getting set up for a celebration tea

Newton & Noss Village Hall 200 Club Lottery July 2022

Congratulations to the winners in the 4th of the 12 monthly draws.

- ⇒ 1st Prize - £50 - Number 2028 - Elizabeth Riley
- ⇒ 2nd Prize - £30 - Number 2217 - Carole Murphy
- ⇒ 3rd Prize - £20 - Number 2152 - Stephen Hawkins
- ⇒ 4th Prize - Bottle of Wine kindly donated by Carrie Storey - Number 2119 - Kathryn Rooney



For £15 you can be part of the 8 remaining draws of the year

To join, please visit www.nnvh.org.uk or contact Sharon on 07752 308142. Each month you could win a cash prize or a prize donated by a local business to whom we are very grateful.

Amazon Smile - a donation that costs you nothing

Amazon Smile has exactly the same products, at the same price as Amazon.

Use your normal Amazon login details with smile.amazon.co.uk

By using smile.amazon.co.uk, Amazon donates 0.5% of the value of eligible purchases to your chosen charity, which could be the Newton and Noss Village Hall, if you so wished.

As of May 2022 Amazon Smile has donated £139.98 to the Village Hall.



PLANNING

Planning Application Ref: [1639/22/FUL](#)

Replacement dwelling and associated works (Resubmission of 4444/21/FUL)

Address: The Blossoms Lower Court Road

A revised proposal to replace a two-story house near the far end of Lower Court Road supersedes the previous “box” design which was withdrawn. This new design is for a more “conventional” house having a mix of light grey render and Cedar Cladding under a natural slate roof. The long, narrow approach road dictates that the contractors will need a careful and considerate attitude, which must be reflected in the Construction Management Plan.

Land opposite Butts Park [2982/21/FUL Newton and Noss Community Land Trust](#)

Revised plans have been submitted for The erection of 20 residential units (17 social rent and 3 open market) with associated car parking and landscaping. This proposal is out for consultation until 21st July

Although the revised plans are not yet shown on the SHDC Planning website they should be uploaded very soon. We understand that any comments already made will normally stand unless they are superseded by details or information contained in the revised plans.

Land west of Collaton Park – 125 Houses, commercial units, and landscaping etc. Planning Application Ref: [3335/21/FUL](#).

Following the decision of the South Hams District Council Development Management Committee to approve the proposal, there were one or more requests to the Secretary of State for Housing, Communities and Local

Government to call in the application for determination. It has been confirmed that the Secretary of State has decided not to call in this application.

Building Works

Dear Residents,

We are undertaking remedial works at Mossgara House, between Pillory Hill and Junket Corner, over the summer months. The works involve the stabilisation of the ground which has slipped some time ago and needs to be stabilised to prevent further slippage issues.

We will have some plant accessing the property from the foreshore to remove the slipped material and will be using soil anchors and piling to stabilise the remaining bank.

Whilst we will do our utmost to keep noise and disturbance to a minimum there are some works that cannot be undertaken without this.

AB Special Projects Ltd

Whats On?

[Yealm Gardens Society](#)

Open Gardens Sunday 3rd July 1pm - 4.30 pm

7 gardens in Newton Ferrers are open:

Yealm Cottage, Newton Hill

2 gardens just off Parsonage Road - Cottage Green and The Old Piggery

3 gardens in Yealm Road - Windlesham No. 40, The Nook No. 45 and Wide View No 83 Yealm Road.

Court Road Appledore No 84, where tea & cakes will be served for £4.

Map & list of open gardens will be available to collect from The Bower (house to left of the WI Hall) from 1 pm on the day of opening.

There will be donation boxes in gardens - the proceeds will be shared between YGS & Ukraine appeal.

As in so much of Newton Ferrers some of the gardens are on slopes & have steep steps!



5th July Tuesday Lunch Club WI Hall 12.00 noon

PLYMOUTH PHILHARMONIC CHOIR

ORB & SCEPTRE

A concert to celebrate the
Queen's Platinum Jubilee

Classic FM Presenter: John Suchet

Organist: Timothy Noon

Conductor: Christopher Fletcher

Saturday 9th July at 7.30pm

The Minster Church of St Andrew, Plymouth

Tickets £18 in advance, £20 at the door

Under 16s / students £5

Concert Ticket Manager 01822 853791

Full details on the choir's website

www.plymouthphilchoir.org

SATURDAY,

**23 JULY 2022 FROM 10:30-
12:30**

Shark Day Egg case Hunt and
Strandline Walk

Wembury Marine Centre



SUNDAY, 24 JULY 2022

FROM 09:00-11:00

National Whale & Dolphin Watch at
Wembury Point!



Yealm Parchment Craft

Next lesson 29th July 2022

Project: Blendable pencil

Newton Ferrers WI Hall. PL8 1PJ

14.00 - 16.00



Choice of design

THURSDAY LUNCH CLUB

We look forward to seeing you at our next TLC Lunch in
Newton & Noss Village Hall

Thursday 28th July at 12.15pm

New Members always welcome

£6.00 for a delicious 2 course meal, followed by tea/coffee

*Please contact Jane Barnett to confirm your attendance
and/or more information on 872663*

mrandmrsbarnett@gmail.com

Newton and Noss Climate Emergency and Biodiversity

Flower Pot Trail

Saturday & Sunday

30th and 31st July

11.00am - 4.00pm

Vote for your favourite display of pollinating flowers at St Peter's Church in Noss Mayo, The Post Office or Holy Cross Newton Ferrers.

Buy a trail map for 50p that marks the numbered displays in the two villages.

The pot with the best score in each village will be awarded a copy of 'Gardening for Wildlife' book.

Funds raised will be spent on increasing the biodiversity of our villages

N.B. It's not too late to enter a pot, extended to 15th July

Entry details at the Post Office

Saturday 13th August & Sunday 14th August
Pop Up Arts & Crafts (plus Cake)
from The Middlecombe Creative Collective
Revelstoke Room NNVH 10.00am - 4.30pm



Lifeboats

RNLI Yealm & District Branch

SAVE THE DATES: August 27th and 28th for the annual RNLI Art Sale at the WI Community Hall. We have over 40 local artists wishing to exhibit their work, so please do put the dates in your diary to support this event. Before then on Saturday mornings in August we will be manning our souvenir table outside Luscombe Maye – this is a chance to start your Christmas shopping, plus of course buy your Christmas cards, your 2023 diary, and exciting novelty gifts for the children.

Your support will help our RNLI lifesavers to continue their work of saving lives at sea.

Thank you.

Elizabeth James



Coffee Morning

10.30am – 12.30pm, Tuesday 12th and 26th July

Holy Cross Church

Our village coffee morning has now been running successfully for several months on the second and fourth Tuesday of the month in Holy Cross Church from 10.30am to 12.30pm.

Do come along for a cup of coffee or tea and a good old chat. Transport to and from can be arranged.

If you would like a lift please contact Ruth Thrush (872503), Mary Ayres (872225) or Phil Davis (872891).



Dementia Friendly Parishes *around the Yealm*

Congratulations and thank you to our Great Parishes Walkers

A big thank you to Caroline and Rob Hirst who, on Saturday 28th May, completed their 16.5 mile fund raising walk around our five dementia friendly parishes. At the time of writing in early June, they had raised just over £2,000 and donations continue to come in. In perfect weather, they started at Holbeton at 7.45am and finished in Yealmpton at 4.30pm, stopping off at local pubs for a brief rest and welcome from their supporters. Thank you to everyone who cheered Caroline and Rob on their way. Your support and generosity make all the difference to us as a small local charity entirely dependent on efforts like this to pay for our Project Coordinator and Project Support Worker who provide individual help and group activities for local people and families on their journey living with dementia. Thank you to Caroline and Rob for their time, enthusiasm and passion for our charity. If you would like to donate to their walk please follow the links to the *Just Giving* page on our website www.dementiayealm.org

From the Art and Craft Group - Reg Wilkinson, who died in March, was well known in Yealmpton for his deep connection with the Royal British Legion and also for his wing-walk and other amazing adventures he undertook to raise money for charity. He was also an extremely talented watercolour painter. Through his family and friend Lesley, a selection of items from his studio has been donated to the DFPY Art and Crafts Group. We would like to thank them very much; it is greatly appreciated that they thought of us and we will think of Reg always.

Watch out for two singing events in July in Yealmpton - Tuesday 5th July the South Hams Choir and on Saturday 9th July the Mevagissey Male Voice Choir, details on posters and Facebook.

The **Art and Crafts Group** on **Mondays 4th and 18th July** 10.30am – 12 noon at Yealmpton Community Centre, £3.00.

The **Gentle Exercise Group** led by Registered Physiotherapists meets every **Tuesday morning** 10.30 – 11.30am at Yealmpton Methodist Church Hall, £5.00.

The **Walking Group** meets in the car park at the end of Barton Close in Wembury every **Wednesday** at 10.30am for a gentle walk and catch up in the fresh air. The **Reading Group** meets on **Thursdays** 10.30am – 12.00 noon in the Parish Room, Bakery Square, Yealmpton, also by zoom, £2.00.

Singing Along will be on **Friday 22nd July** 2.00 – 3.30pm at Yealmpton Methodist Church Hall. Please join us for some community singing, refreshments and fun, £3.00.

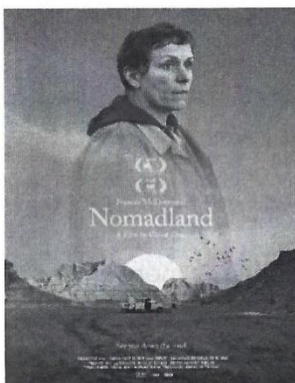
For more information, advice/support please contact Maxine on 07450 206312.

Follow us on Facebook and www.dementiayealm.org.

“We can’t change the person living with dementia but we can change the experience they have in their community”

23rd July Regatta Dance @ Noss Green

Holbeton Film Club



July's screening is **Nomadland** (certificate 12A, *suicide references, infrequent moderate bad language*). This Oscar winning film (best picture, best leading actress and director) portrays a woman in her sixties who, after losing everything in the Great Recession, embarks on a journey through the American West living as a van-dwelling modern-day nomad.

This is showing on **Saturday 9th July** in Holbeton Village Hall. Doors open at 7.00pm, the programme starts at 7.30pm. Tickets on the door £4. Ice creams, teas and coffees will be on sale.

Our programme for the coming months is:

Belfast (12A), Friday 12th August
Emma (PG), Saturday 10th September
Respect (12A), Friday 14th October
Summerland (PG), Saturday 12th November
The Duke (12A), Friday 9th December



Harry Baumer (830274)



UPRIGHT FITNESS CLASSES JULY & ONLINE ZOOM MEETINGS:

Monday, Wednesday and Friday:

Early morning class 8.30 - 8.50am Stretch and Flex

Sessions in the WIC Hall.

THURSDAYS 9.15 – 10.00am DANCE FIT

For more details and information please contact:

Carol Buckland: 872209 **Website** kazjfit@gmail.com

For updates, please see Parish Magazine

2nd August

Tuesday Lunch Club WI Hall 12.00 noon

6th August

Regatta Fireworks 9pm



YEALM REGATTA

Dates for your diary

- 'Rock up and Row' Saturday 2nd July (details below)
- Trophies to be returned by 24th July
to Sue Ansell-Edwards at Barnicott
- Entries by 18th July
- Dance Saturday 23rd July
- Rowing Heats Thursday and Friday July 28th and 29th July
- Rowing Finals Saturday and Sunday 6th and 7th August
- Fireworks Saturday 6th August
- Prizegiving Friday 9th September

For information go to www.riveryealmregatta.co.uk

ROCK UP AND ROW

SATURDAY 2nd JULY at 6.00pm

POPE'S QUAY, NOSS MAYO

BBQ at THE SWAN INN, LOWER GARDEN

Let's celebrate the start of regatta, raise the regatta flag and have a go at rowing. You can try rowing solo, pairs, sculling and crabbers.

A peanut dinghy is available for younger children.

Experienced rowers will be on hand to support.

Everyone is welcome.

See our website for a list of events you can be a part of and celebrate in the community spirit that makes Regatta.

www.riveryealmregatta.co.uk

29th August

St Peter's Revelstoke Village Fete Noss Green/ Gypsy Meadow

Digital Drop-ins from 10.30am WIC Hall, The Green, Newton Ferrers

FREE HELP with your Smart phone / Tablet / Laptop

The digital drop-ins have now been running for just about one year and we hope that everyone who has come along to the talks and sought help from the 'experts' has gained confidence and learnt new skills too.

The sessions in July will be as follows:

- 1st July Open Session
- 8th July Open forum with a panel of 'experts'
- 15th July Open Session

22nd July to 16th September - NO SESSIONS

This will be your last chance before September to ask those burning questions of our team and there will be an open forum with our panel on 8th July, the week before we take a break.

A date for your diary: 16th September 2022 when we restart.

COVID If you feel more comfortable wearing a face mask or visor then we will too, just ask.

For further details please contact either Peter Hinchliffe or Mary Ayres by email: nndigital.dropin@gmail.com

**SUNDAY, 7 AUGUST 2022
FROM 11:00-15:00**

Wembury Pirate Day & Treasure Hunt

Wembury Marine Centre

